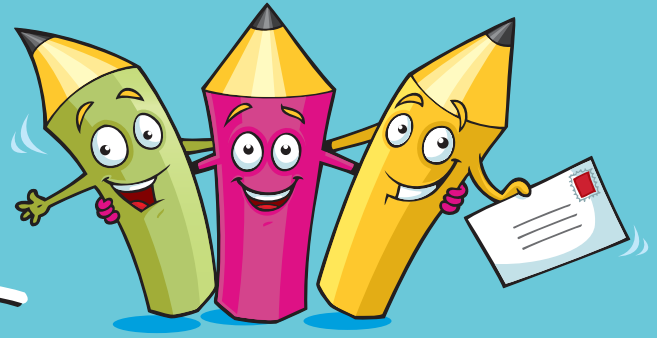




Cambridge English Penfriends



Has your school joined Cambridge English Penfriends?

Help your students **make friends with other English learners around the world** through our fun, international Cambridge English Penfriends activity. Your students will **design and share cards** with learners at a school in another country. The cards are based on a theme – the current theme is ‘Where I live’.

At Cambridge English Language Assessment, we believe that students should learn English in a way that is **practical, fun and communicative**, and should always have the opportunity to practise what they have learned.

Here's the opportunity!

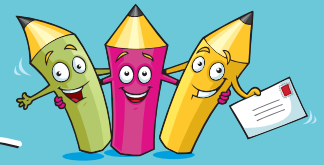
Through Cambridge English Penfriends, we will connect your school with a school in another country so you can exchange cards designed by your students. If your school hasn't joined Cambridge English Penfriends yet, what are you waiting for? Register at www.cambridgeenglish.org/penfriends

Why take part?

Join Cambridge English Penfriends to:

- **access new, fun** classroom activities
- **help your students practise** reading and writing in English
- **connect to a school** in another part of the world, safely and easily
- develop a relationship with another school, possibly by exchanging more letters, arranging a video conference or even a school exchange
- **take a break** from the usual course of studying English
- **show students that English is practical**, helping them communicate internationally
- **build your students' confidence** as they communicate in English with another student.





How to get started

Step 1. Register:

Register your school at www.cambridgeenglish.org/penfriends
Tell us where you are, how many students are taking part and the age group of your students.
It takes us about one week to check your registration. We will then **welcome your school** to our website and **send you an email** confirming your school is a member of Cambridge English Penfriends.

Step 2. Choose a partner school

Look at the world map on our website to find a school in another country that is similar to your own school in terms of age range and number of penfriends. Your partner school has ten days to accept your penfriend request. When they accept, we will email you your **Penfriends Activity Pack**

This includes a:

- lesson plan
- certificate you can print out for each student
- members' banner you can use on your website
- poster for your classroom
- 'Penfriend Partner School' letter for you to send to your partner school along with your students' cards.

Step 3. Start designing!

Use the lesson plan to help your students design Cambridge English cards, based on a theme you are given.

Step 4. Get connected:

Choose three of your students' cards, scan or photograph them, and upload them to our website for the world to see.

Step 5. Register:

Post all your students' cards to your partner school. Wait to receive cards in exchange and share them among your students!
We will provide new themes regularly. This means you can either send **more cards to your partner school**, or **choose a different partner school** to connect with more cultures around the world.
You could also **arrange further exchange activities** with your partner schools, such as emails, videos and class internet telephone calls.

Don't forget to print out a certificate for each of your students!

Sign up today!

www.cambridgeenglish.org/penfriends